

## EXTENDER FOR NON-STANDARD HEIGHT

### NOTES

- Unless otherwise noted, fabrication of miters and accessories are furnished standard utilizing a non-penetrating quicklock joint, then factory sealed watertight.
- Welded accessories require a minimum material thickness of .050"
- For non-90 miters, see separate print approval
- Product should be installed per provided installation instructions
- ANSI/SPRI/FM 4435/ES-1 Test Pressure up to 107 psf

### APPROVALS



**ANSI/SPRI/FM 4435/ES-1**  
Test Pressures listed in notes

### PROJECT INFO

Project Name: \_\_\_\_\_

Architect: \_\_\_\_\_

Roofing Contractor: \_\_\_\_\_

**Project Type:** \_\_\_\_\_

☐ By selecting this box you have verified and confirmed that dimensions, sizes, and quantities are correct. All products will be installed in strict accordance with printed instructions.

Date: \_\_\_\_\_

**Hickman Edge Systems**  
4 Commerce Way  
Arden, NC 28704  
Phone: 828-676-1700  
www.hickmanedgesystems.com

SHT #: 1 OF 2

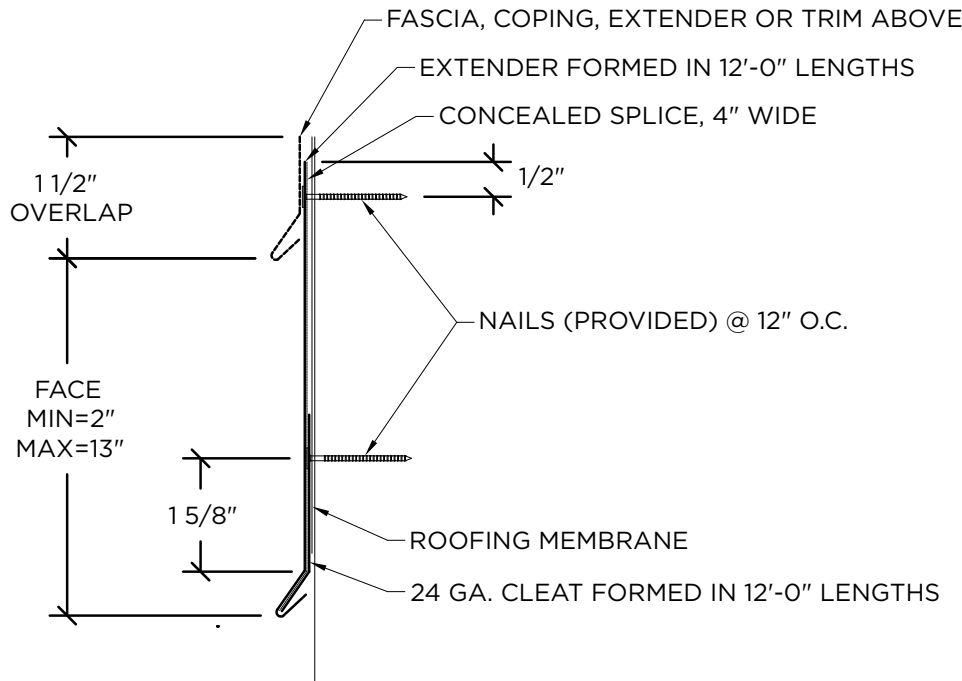
DATE: 09/21/ 22

DRN BY: PL

CKD BY: MM

DWG #: 64014-36654

REV: A



### DIMENSIONS

Please Fill Out Dimensions On Drawing

### MATERIAL

- ☐ 24 Ga. Galv. Steel
- ☐ 22 Ga. Galv. Steel
- ☐ .040" Aluminum
- ☐ .050" Aluminum
- ☐ .063" Aluminum
- ☐ OTHER: \_\_\_\_\_

Color: \_\_\_\_\_

Finish: \_\_\_\_\_

**Substrate:** ☐ Wood  
If substrate is not given, wood fasteners will be provided. ☐ Masonry  
☐ Metal

### QUANTITIES

\_\_\_\_\_ Lineal Feet (12'-0" Lengths)

\_\_\_\_\_ Outside Miter (90°)

\_\_\_\_\_ Inside Miter (90°)

\_\_\_\_\_ Right Endcaps

\_\_\_\_\_ Left Endcaps

\_\_\_\_\_ Right Endwall Flashing

\_\_\_\_\_ Left Endwall Flashing

Accessory Type:

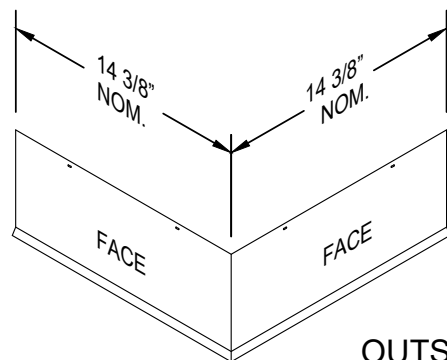
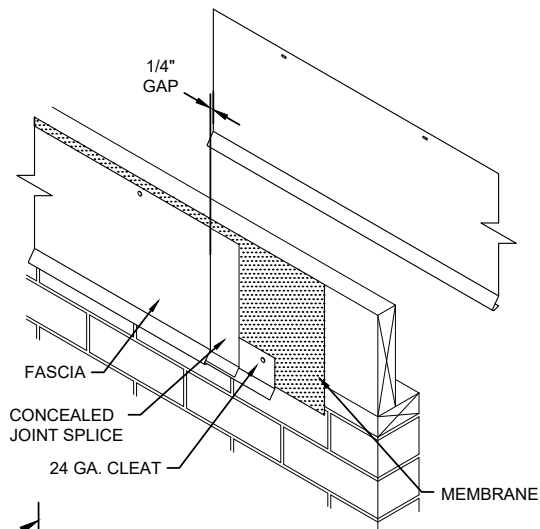
- ☐ Quicklock (Default)
- ☐ Welded (Surcharge)

# EXTENDER

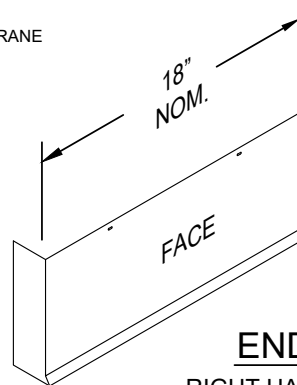
## STANDARD ACCESSORIES

### NOTES

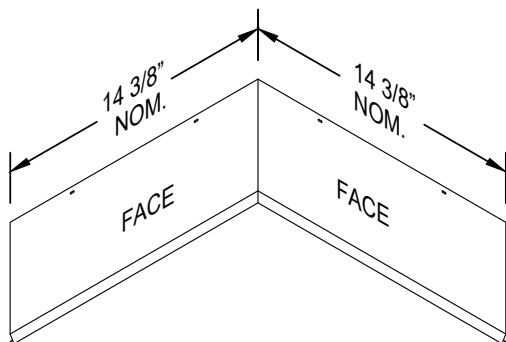
- Standard miter angle is 90 degrees
- For special miter requirements, attach sketches or consult manufacturer for assistance.



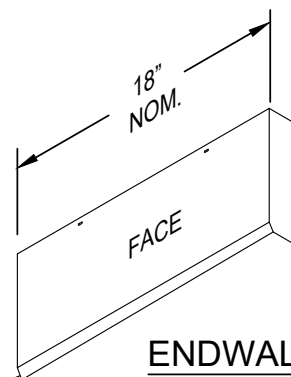
OUTSIDE MITER



ENDCAP  
RIGHT HAND SHOWN



INSIDE MITER



ENDWALL FLASHING  
LEFT HAND SHOWN

**Hickman Edge Systems**  
4 Commerce Way  
Arden, NC 28704  
Phone: 828-676-1700  
www.hickmanedgesystems.com

SHT# 2 of 2

DATE: 09/21/ 22

DRN BY: PL

CKD BY: MM

DWG #: 64014-36654

REV: A